

**OMSI**2

**ADDON**

# BERLIN X10

With the express bus between  
Bahnhof Zoo and Teltow

**MANUAL**



V 1.3

 **HALYCON**  
MEDIA

SERIAL NUMBER

## EPILEPSY WARNING

A very small portion of the population have a condition which may cause them to experience epileptic seizures or have momentary loss of consciousness when viewing certain kinds of flashing lights or patterns that are commonly present in our daily environment. These persons may experience seizures while watching some kinds of television pictures or playing certain video games. Players who have not had any previous seizures may nonetheless have an undetected epileptic condition.

- If you keep playing over longer periods, you should take a 15-minute break every hour
- Please do not play when tired
- Ensure sufficient light and sit as far away from the screen as possible

If you suffer from epilepsy, please consult your doctor prior to playing computer games. Do it immediately as soon as you encounter the following symptoms while playing: vertigo, impaired vision, twitches or any kind of uncontrolled motion, unconsciousness, disorientation and/or cramps.



## TABLE OF CONTENTS

<b>EPILEPSY WARNING</b>	<b>2</b>
<b>1. SYSTEM REQUIREMENTS</b>	<b>4</b>
<b>2. INSTALLATION / UNINSTALLING</b>	<b>4</b>
<b>3. TECHNICAL INFORMATION</b>	<b>5</b>
Tips for better performance	5
Technical support	6
Product registration at Halycon Media	7
<b>4. THE VEHICLE</b>	<b>7</b>
Quick start	7
General remarks	8
Technische Daten	8
Controls	9
Entering bus routes	13
<b>5. THE ROUTE</b>	<b>15</b>
<b>6. WHAT'S NEW?</b>	<b>15</b>
<b>7. USEFUL ADVICE</b>	<b>16</b>
<b>8. CREDITS / LEGAL NOTICE</b>	<b>18</b>
<b>9. APPENDIX</b>	<b>20</b>
Route maps	20
Depot	20
The Routes	20
Scenarios	25
Route list	27



## 1. SYSTEM REQUIREMENTS

**IN ORDER TO PLAY THE ADD-ON „OMSI 2 – BERLIN X10“, YOU NEED A PC-COMPATIBLE COMPUTER WITH THE FOLLOWING MINIMUM SPECIFICATION:**

- An installed full version of OMSI 2 – The Bus Simulator (version 2.2 or higher)
- Windows Vista or Win 7, Win 8.1 / 64bit recommended
- Dual core processor (Core i5 with 2.8 GHz or similar), Quad core with 3.0 GHz recommended
- 4.0 GB central memory, 8.0 GB recommended
- 3D graphic card with 1.024 MB graphic memory minimum, 2.048 MB recommended
- 4.0 GB of free disk space minimum for installation
- Sound card
- DVD-drive, keyboard and mouse
- DirectX 9.0c compatible hardware and software

## 2. INSTALLATION / UNINSTALLING

Insert the **OMSI 2 – add-on: Berlin X10 DVD** into your DVD-drive and wait for the installation program to start. Follow the on screen instructions to proceed with the installation.

If the auto start function of your drive is deactivated, double-click on the icon „My Computer“ on your desktop, then choose the correct drive reference for your DVD-drive and the file Setup.exe to begin the installation.

If you are installing from the the download version, please unzip the files prior to the installation into a folder. To do so, double-click on the zip-file, mark all files and copy them into an empty folder. To install the add-on, start the setup-file from this folder by double-click.

When the installation has started, please follow the advice on screen to install the game on your computer.

The add-on is installed into your OMSI 2 installation folder. If this does not happen automatically, please choose the appropriate OMSI 2 folder manually. To uninstall the add-on, click on [programs] in the Windows start menu, choose the group [Halycon Media] and then click on the uninstall icon.

## 3. TECHNICAL INFORMATION

### TIPS FOR BETTER PERFORMANCE

The add-on Berlin X10 at times may demand a lot from your computer. Performance may be affected due to the density of the city and designed for particularly high traffic. OMSI 2 offers many configuration options in the settings so that you can adjust this to your preference and some points are particularly pertinent for fluidity when playing. From experience, shadows puts particular stress on the system, and the result is still not always perfect. Therefore, we recommend deactivating the shadows. Normally, traffic makes for the highest system load, meaning moving cars, buses and trains. For this reason, performance tends to be better when driving on Sundays or in the late evenings, for example, rather than during rush hour. Your most important tool is the schedule priority. At lower values, the negligible AI-lines (which, for example, are standing at the side of the road for most of the time) are not loaded. The player can take all routes at any given time.

The game comes with three readymade settings that can be applied as an option. These are the high, medium and low setting. For starters, we recommend the setting X10 medium, which can be changed for high/low or individual settings. These settings also make sense for many other maps, although not for all.

Another possibility to boost performance is a simpler rendering of the vehicles. In the user's manual folder, there is the subfolder ailsts. If you copy the „Standard low“ variant into the folder \maps\X10 Berlin, you will see vehicles with reduced rendering that can hardly be distinguished from one another. In this case, though, you cannot take driving buses, and the player's bus must be placed on one's own! To undo this change, copy the Standard variant into the ailsts-folder.

If you see white surfaces within the bus, a lot of internal memory is taken up. To reserve more memory for OMSI, you can use the so-called 4GB-Patch:

[http://www.ntcore.com/4gb\\_patch.php](http://www.ntcore.com/4gb_patch.php).





## TECHNICAL SUPPORT

Due to the large number of different hardware- and software combinations, using our software may lead to technical difficulties.

Please use the latest drivers for your graphic and sound cards. Start the installation and the setup program with administrator rights. It is also possible that files cannot be saved correctly to your hard disk.

To use administrator rights, right click on the setup program and choose „Run as administrator“.

Consult the FAQ (frequently asked questions) on our website [www.halycon.de](http://www.halycon.de) to see if your problem is already known. It is most likely that you will find any difficulties you have encountered in this section. If you do not find what you are looking for, feel free to contact us via the contact page on the website.

In order to help you as quickly as possible, please describe your problem exactly and send us the log file from DirectX (DXDIAG). It contains all information relevant to the driver. To do this follow these instructions:

- 1) Click [Start] in the taskbar and choose [Run].
- 2) Enter „DXDIAG“ (without quotation marks) and click [OK].

The program starts, and you can read all relevant information as well as save it as a file.

**TIPP:** Register your product at MyHalycon on the website. Then you will receive free information about updates, patches or expansions for your program.

## PRODUCT REGISTRATION AT HALYCON MEDIA

You can register this add-on or any other software from Halycon for free on the website [www.halycon.de/myhalycon](http://www.halycon.de/myhalycon) under MyHalycon.

Free registration of your Halycon products offers many advantages. You will receive information about new releases of similar add-ons, successive versions or bonus content. You gain access to free bonus content as soon as it is available at Halycon and enter the regular competitions. More features are being prepared. Come and take pot luck!

All you need is a login name and valid e-mail address. Please note that each serial number can be used only once for registration. Do not pass on your personal serial number.

**Enjoy MyHalycon!**

## 4. THE VEHICLE

### QUICK START

Choose vehicle DL05 (or DL07-09) when placing. Note that the hof-file corresponding to the map is predefined (in this case: „X10 Berlin“).

After that, you must choose a point for placing. A map of all entry points is located in the OMSI root directory, subdirectory \ AddOns \ Berlin X10 \ Berlin-X10-Streckenplan.pdf.

Then switch to driver's view with **[F1]**. Start the electronics **[E]** and the engine **[M]**. Put the vehicle into gear **[D]** and release the parking brake **[.]**. Depending on the pressure within the system, the bus will now begin to move, and you can accelerate as well as steer. At night, you should turn on the headlights **[L]** and interior lights **[8] [9]**.

To encourage passengers to travel on your bus you must set appropriate signs at the respective bus stops so that passengers understand where they can board the bus.

This can be done using the game menu. The detailed planning of routes is described in the Chapter route settings.





## GENERAL REMARKS

The DL05 was the world's first low floor bus with three axles. Over the course of 100 years, MAN/Büssing built as many as 6.000 buses for Berlin. For the first time, BVG used double-decker buses with air conditioning, and the number of seats is also impressive! The purchase price was EUR 400.000 each. Today, over 400 of these vehicles characterise the cityscape of Berlin.

Some of the distinctions between the production models DL05, 07, 08 and 09 have been included in this version of Berlin X10.

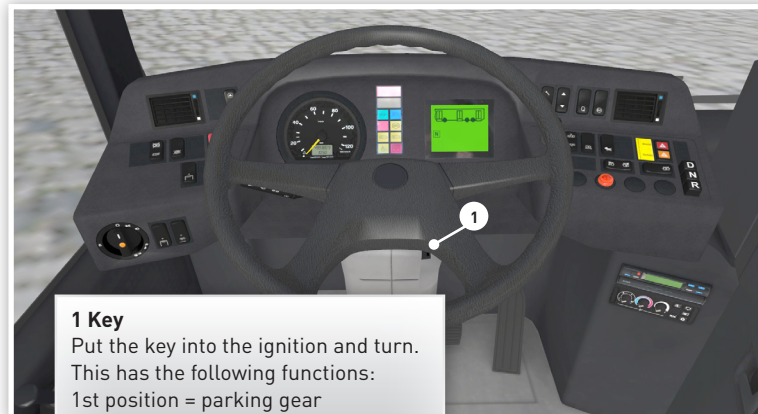
There is also an AI-version of the double decker bus. It uses simplified models and scripts that the player cannot change. Such AI-versions are also used by the GN92, for example. In standard setting, all buses on playable routes can be selected.

## TECHNISCHE DATEN

The following are some choice specifications. Instead of listing all bus parts, we recommend that you investigate all of the buses to maximise your enjoyment and the challenge of this product.

<b>Vehicle</b>	MAN Lion's City DD
<b>Length</b>	13.73 m
<b>Breadth</b>	2.55 m (incl. mirrors)
<b>Height</b>	4.06 m (incl. antenna)
<b>Admissible total weight</b>	26 t
<b>Seats</b>	83+1
<b>Standing places</b>	45
<b>Engine</b>	MAN D 2866 LUH 51

## CONTROLS



### 1 Key

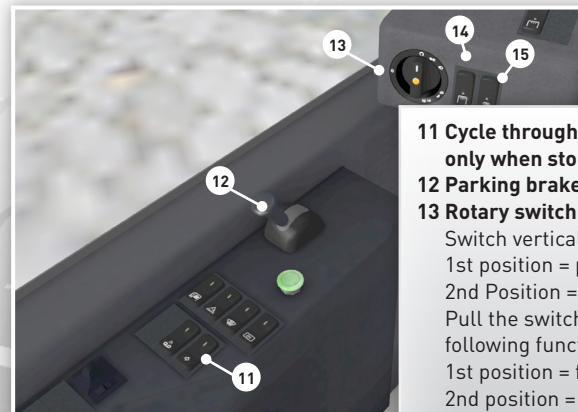
Put the key into the ignition and turn.

This has the following functions:

1st position = parking gear

2nd position = drive

3rd position = start engine



**11 Cycle through the camera screen only when stopped**

**12 Parking brake**

**13 Rotary switch headlight functions:**

Switch vertical = lights out

1st position = parking light

2nd Position = headlights

Pull the switch out enable the following functions:

1st position = fog light

2nd position = rear fog light

**14 Lighting on the lower deck**

Middle position = off

Lower position = normal

Upper position = full lighting

**15 Lighting for the driver's seat key [6]**



- 21 Retarder direct control
- 22 Deactivate TCS
- 23 Hazard warning lights
- 24 Lighting upper deck key [8]
- 25 Speedometer in km/h
- 26 Kilometer-counter and clock
- 27 Dual lever indicators and windscreen wipers  
[W] fast wipe  
[Shift]+[W] slow wipe
- 28 Horn
- 31 Stop warning light
- 32 Caution warning light
- 33 Indicator lights

- 34 Full beam
- 35 Reservoir pressure
- 36 ABS-warning light
- 37 Stop button – shows
- 38 Stop button wheelchair  
At the next stop, you have to use the additional kneeling (element 46) and interrupt the door automatic (element 48). If a wheelchair user has pushed the button, the ramp at the middle door must be lowered manually.
- 39 Door control



#### 41 Multifunction display

This display shows all of the information and warnings concerning your vehicle. The symbols are mainly self-explanatory. The lower section shows the next stop and any delay that has occurred within an active schedule. A "+" attached to the delay value indicates an early arrival and therefore requires that you stop as soon as possible and wait until the + extinguishes. This is in accordance with BVG regulations.

**42 Browse display** to see further elements

**43 Browse list of stops** to correct announcements

**44 Confirmation of outstanding commands** and route settings

**45 8pm switch** as stop brake without opening the rear door

#### 46 Kneeling

In addition to automatic kneeling (3cm), the bus can be lowered by another 4cm for wheelchair users or perhaps baby buggies to use. To do so, push down the button until the final position is reached.

**47 Switch Auto** to interrupt the light barrier at the rear door

**48 Switch baby buggy** to interrupt the light barrier at the middle door

#### 49 Fire alarm

#### 50 Door block front

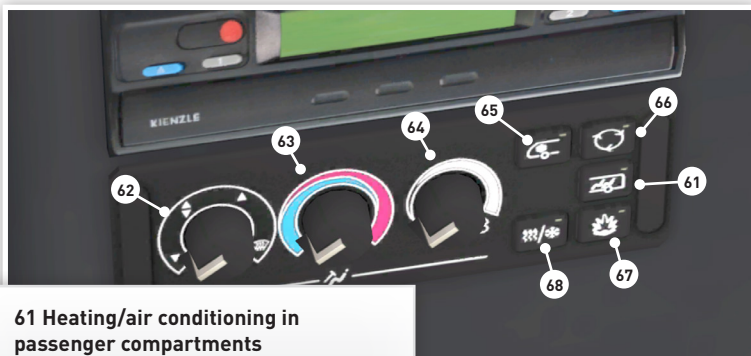
#### 51 Door button front

**52 Door release** Middle/back door and stop brake

**53 Automatic transmission** – Drive, Neutral and Reverse

#### 54 Call the control centre





### 61 Heating/air conditioning in passenger compartments

When you start the engine, the automatic heating and air conditioning for the passenger compartment starts automatically.

### 62 Air circulation for driver's seat

### 63 Temperature for driver's seat

### 64 Demister driver's seat

### 65 Air conditioning for driver's compartment

### 66 Fresh air/air circulation driver's seat and passenger compartment

### 67 Additional heating switch to toggle on and off

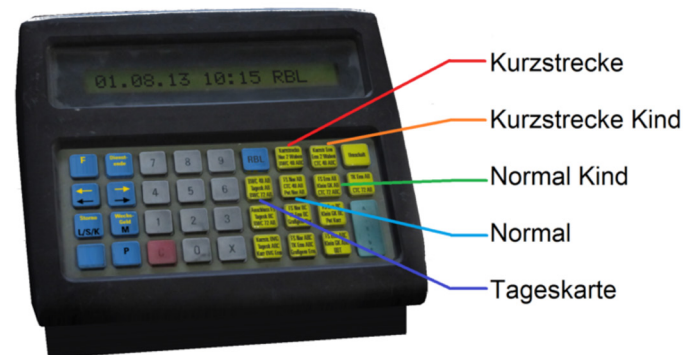
### 68 Reheat on / off

## TICKET PRINTER

How to operate the printer depends on which ticket printer appears. Up to the year 2013, the old ALMEX printer is loaded as standard. If the game is starting in 2014 or later, the new Atron AFR4 printer is loaded. For experts: The year can be changed in the file visual\_constfile.txt. To help you enter the bus routes, a small cheat sheet appears below the ticket printer. This disappears when you click on it.

## SELLING TICKETS

The add-on offers a simple ticket system with five different tickets.



**ALMEX:** After pushing the ticket button, press the green "Ausgabe" button to issue the ticket.



**Atron AFR4:** The ticket-selling screen appears automatically at stops. The tickets are in the right-hand column. Only the day tickets need to be called up by selecting "Berlin AB weitere" and then selecting "Tageskarte Regel Berlin AB". Confirm your choice once you have selected a ticket.



## ENTERING ROUTES WITH ALMEX

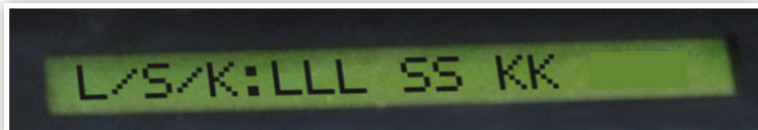
Settings for displays and any announcements are made via the ticket printer.



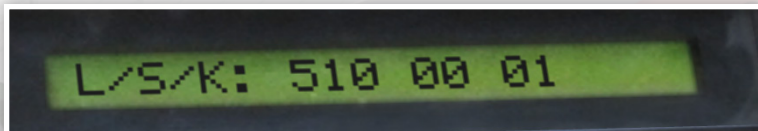
**Step 1:** First select the scheduled service.



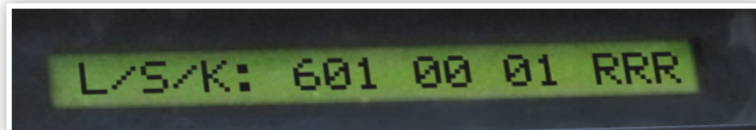
**Step 2:** Push the RBL button and the L/S/K button. The following field appears:



**Step 3:** Enter a code. Where you see LLL, enter the route. For the letter "X", enter the number 5. For "M" enter 8 and for "N" enter 9. SS stands for the "series": always enter "00" here. "KK" is the route code you will find on your route plan for the day. If you cannot enter this code (because it contains letters, for example) you can enter "00". Example for entering Tour 1 on the X10 route:



**Step 4:** After confirming with the "Eingabe" (enter) button, the system searches for a matching route. Finding routes automatically only works on the DL bus and only with the Berlin X10 map. If a route number appears, it can be confirmed with "Ausgabe". If "RRR" appears, a three-digit route number must be entered and then confirmed. The manual contains a list of all routes. For experts: Finding routes automatically is defined in "X10 Berlin.hof" in the section on Almex routes.



**Step 5:** The destination code corresponding to the route is displayed. Normally, it must only be confirmed once more, but you can choose a different destination number at this point as well.



**Step 6:** Choose a stop to start from. The first stop on the route is automatically selected. To set the displays to run starting from a later stop, you can skip through them by means of the arrow buttons on the left and right side of the printer. Finish by confirming your choice.



**Additional features:** Notifications can be sent to the control centre using codes by selecting RBL -> Menü -> CM. Notifications need to be sent, for example, when a wheelchair user boards the bus or when the bus is so full (at 100 per cent capacity) that no further passenger can be allowed on. These and other functions have no impact on gameplay.

**At the final destination:** When a route for the return journey is suggested, use the Q button to confirm this. The Q button is often the right response when the display shows "?" or "!". If no route is suggested, the new route will have to be entered. See Step 2.

## ENTERING BUS ROUTES WITH ATRON AFR4

Settings for displays and any announcements are made via the ticket printer.



**Step 1:** First select the scheduled service.



**Step 2:** Press the green button. The following field appears:



cannot enter this code (because it contains letters, for example) you can enter "00". Example for entering Tour 7 on the X10 route:



route number must be entered and then confirmed. The manual contains a list of all routes. For experts: Finding routes automatically is defined in "X10 Berlin.hof" in the section on Almex routes.

**Step 3:** Enter a code. The first 3 numbers are the specific bus route. For the letter "X", enter the number 5. For "M" enter 8 and for "N" enter 9. Enter "00" in the second number group. Enter the route code from your route plan in the third group of numbers. If you

**Step 4:** After confirming with the green button or with "Bestätigen" (confirm), the system searches for a matching route. Finding routes automatically only works on the DL bus and only with the Berlin X10 map. If the route is found, it is automatically set.

Otherwise, the three-digit



on the ticket printer, no longer in the multifunction display on the dashboard.

**Additional functions:** The buttons F and C can be used to toggle between various menu views. Some functions are only available when the stop brake has been deployed. It is possible, for example, to send notifications by entering codes, to switch off the keypad tones and to set the night mode on the display.

**Just before departure:** 30 seconds before starting from the departure stop, beeping is audible. This reminds the bus driver to get ready to depart. It can be switched off by clicking on the tick mark.

**At the final destination:** When a route for the return journey is suggested, a click on the tick mark confirms it. If no route is suggested, the new route can be entered using the menu item "L/S/K".

### For professionals:

The automatic route identification is defined in „X10 Berlin.hof“ in the Almex Routes section.

**Step 5:** If necessary, correct the first stop using the up arrows. The next stop and the display of how early the bus is running is only shown



# FRIEDRICHSTADT- PALAST BERLIN

Europe's Show Palace

"Las Vegas  
in Berlin"  
THE SUNDAY TIMES

## Willkommen auf der größten Theaterbühne der Welt!

Der Friedrichstadt-Palast in Berlin ist in seinem Programm und seinen Dimensionen weltweit einzigartig. Mit seinen enormen Möglichkeiten entführt Sie der Palast in fantastische Welten und schafft Theatermomente, die Ihnen den Atem verschlagen.

Neugierig? Dann gönnen Sie sich einen Blick in unsere fantastische und einzigartige Welt!

Tickets: 030 - 2326 2326 | [www.palast.berlin](http://www.palast.berlin)

Friedrichstraße 107 | Berlin-Mitte | im Theaterviertel East End



## 5. THE ROUTE

A route of approximately 60km provides space for 4 complete bus lines and 18 additional routes. All areas have their own identity, this can be the city near the zoo or the shopping district, urban areas in the woods, the centre of Zehlendorf or the suburban districts with apartments, business and green spaces. The time of travel, day or night will also have a bearing on the appearance and characteristics of the districts.

For a short description of all lines, see the appendix of your manual.

## 6. WHAT'S NEW?

The add-on offers several functions that are new or have not been used to full advantage before.

Traffic density is regulated depending on the hour, as in real-life, it is quieter in the evening than during the day and of course rush hour is always the busiest. On Saturdays and Sundays, a different timetable is scheduled. The deciding factor are the vehicle types (for example, there are comparably many more taxis driving at night). For 2013, the traffic is even matched to the school holidays!

In the evening, more and more traffic lights are switched off because they are not needed anymore thanks to the low traffic. This nightly deactivation is only possible through tricks and not guaranteed. If a traffic light has any problems, it will switch to safe mode. The add-on also features traffic lights and single signals that, like in reality, never function.

At about 10 traffic lights, buses are to be prioritized. The effect is rather small, though, since it is hardly noticeable in reality or OMSI cannot implement all functions. There is only one traffic light with some kind of bus prioritizing, but even so, this happens only from 9pm on.





## 7. USEFUL ADVICE

In the beginning, you should be aware of the fact that traffic laws are not always adhered to in urban traffic. You will encounter parking offenders or pedestrians violating your right of way on a daily basis.

It is best to prepare yourself by making yourself familiar with the map. To do so, the route map Berlin-X10-Streckenplan.pdf is particularly helpful. Whether you accompany an AI-bus first, follow an AI-bus or start carrying passengers immediately is left up to you.

For easier orientation, you can activate helpers within the game menu. Then, all stop positions are marked with a large symbol. You still see the name of the stops under this symbol, also the lines that stop there and possibly their direction. When in doubt, stop once more, as you are better safe than sorry. At transit stops of the X10, the line number is not marked accordingly. When you go without route helper, you can tell the lines that stop at the respective stop masts.

On the usable lines, all points where you must turn are marked. If all lines go straight at a given junction, there are no route helpers in place. You can drive out of service using the help markers as well with some practice. The so-called dynamic route helpers are not used.

Sometimes, end stations consist of an exit, pause and start point. If these are close to one another, OMSI has difficulties to properly locate the bus. You might have to correct announcements, and it is possible that in spite of an exact stop at the route helper point, no final evaluation for the terminus will appear.

Thanks to a special permission you are allowed to drive vehicles with up to 4.12m height on all roads even when road signs tell you otherwise! The rail bridge at S Zehlendorf is an exception, though. Here, the maximum height is 4.06m (which corresponds exactly to the add-on bus), and you must drive only with the appropriate bus

As a bus driver, you are responsible for your passengers. Therefore, always put safety in front of speed! Be always prepared for other road user's misconduct! Never insist on your right of way! Be particularly wary at accident blackspots! Always keep sufficient distance to the front and the side to master urban traffic. If the misconduct of other traffic participants disturbs you too much, you can deactivate collision in the options menu.

At some points in Berlin, lane marking and turn arrows are sparse. Observe how drivers who know the area behave there! Be especially careful when you turn left without traffic lights!

Although there are many broad roads on the route, it features just as many small lanes. Not all of them are broad enough for buses. In difficult situations, you must claim two adjacent lanes at once as a beginner.

For buses, turning right at junctions is often difficult. Watch both side mirrors not to jeopardize the succeeding traffic when your rear swings out! Always grant pedestrians their right of way!

When you turn in housing areas, you must swerve far onto the oncoming lane. Look around and do not jeopardize anybody with this manoeuvre! Do not forget the giveaway rule "left yields to right" in side roads!



## 8. CREDITS / LEGAL NOTICE

**Development and programming**

Maerkertram  
b3rliner88  
Feindflug  
Benedikt Steffens  
Cooper  
Dan  
MB200  
Mozart  
SchulterSack  
Martel Ratchev  
Arvid Siedermann

**Beta testers**

Андрюха  
Bernhard Eis  
Christian Rolle  
Daniel Butt  
Daniel Ruhland  
Daniel Seiler  
David Oehler  
Dominic Neumann  
Dylan Ng  
Florian Wolf  
Frederic Sohr  
Jan Scholtyssek  
Kevin Jasik

Lukas Mengel  
Mani Kommoula  
Mario Warczok  
Michael Back  
nemeza  
Nick Leiter  
Raphael Proß  
Stefan Grusche  
Torsten Lawrenz  
Tristan Wunderlich  
Ville Elomaa

**Other participants**

Adrian Rieck  
(3D-Objects)  
Benjamin Duven  
Benjamin E.  
Bernd Meinschien  
(Installer)  
Carsten G. (Grenko)  
Codebucket  
(www.codebucket.de)  
Daniel Stritzke  
Dirk Schröter  
Giovanni  
Heike Holst (Lektorat)  
Jan Kieseewalter  
(www.jan-kieseewalter.de)

Jonas Elbers  
Katy Schröter  
Marc Beindorf  
Markus Schmidt  
Matthias Gose  
(3D-Objects)  
Tim Asare  
Zane

**Publishing**

Halycon Media  
www.halycon.de  
Volker Rieck

**Layout packaging / Manual**

BD Media  
Bernhard Doeller  
www.bd-media.at

**Product management / PR / S.E.**

Wineberger  
Projektmanagement  
www.wineberger.de  
Eckhard Wineberger

One or more textures on this map have been created with images from CGTextures.com. These images may not be redistributed by default. Please visit [www.cgtextures.com](http://www.cgtextures.com) for more information. Destination and vehicle schedules have in part been created with „OMSI Helpmaker“. More information at [www.halycon.de](http://www.halycon.de) Manual image rights © 2015/2019. Cover: BD-Media Bernhard Doeller, Maerkertram. Inlay: philipk76 - fotolia.com. Screens / Manual images: Maerkertram. Copyright © / © 2015/2019 Halycon Media GmbH&Co. KG All rights reserved. The content of this manual and the respective AddOn software are properties of Halycon Media or the respective owners and copyrighted. Any reproduction, even in part, is strictly prohibited. Microsoft, DirectX, Windows are registered trademarks of Microsoft Corporation in the US and/or other countries. All other brand names or registered trademarks mentioned in this product are properties of the respective owners.

# For more variety in OMSI road traffic



- New different vehicles in numerous variants and colors
- New individual sounds
- Customized scripts



## 9. APPENDIX

### ROUTE MAPS

Timetables, vehicle schedules and further information (eg. Codes for Route input) are located in the OMSI root directory, subdirectory \AddOns \ Berlin X10 \.

### DEPOT

#### DEPOT CICEROSTRASSE

Depot Cicerostraße is located in the Berlin district of Wilmersdorf. From there you can quickly gain access to the main route into the city and the western part of the city. There are long routes to Zehlendorf and Teltow as well. The depot in its current state has been in existence since 1958. It is a large depot taking in more than 200 buses. In the add-on it covers all BVG-lines.

#### DEPOT STAHNSDORF

Depot Stahnsdorf is small and neatly arranged. It takes 40 buses and is responsible for both city as well as regional routes in Teltow, Stahnsdorf and Kleinmachnow. In the add-on this means routes X1, 601, 602, 620, 621, 623, 625, 626, N12 and N43. Backing in and out with articulated buses can be challenging. The depot was built in 2002; prior to that buses were garaged at Schwarzer Weg.

### THE ROUTES

Below is a short description of all the routes. First there is information about the two depots and then details about the completely drivable routes X10, 115, 625 and 626. There is also a description of some routes that are only partly the same as the real route. In general, what is displayed on the buses is the actual destination, not the simulated version.

#### X10

Route X10 gives this add-on its name but it is only one of many routes to be enjoyed. Since 2001, this express bus commutes from Bahnhof Zoo via Kurfürstendamm, Halensee, Grunewald, Schmargendorf, Dahlem and Zehlendorf to Teltow in Brandenburg, carrying about 10.000 passengers each day. As an express bus, route X10 leaves out 16 stops. X10 is the longest line in the Add-on; according to the schedule the 18km drive takes 43 to 52 minutes depending on

the hour. During rush hour traffic, it may take up to one hour. The regular route goes from Hertzallee to Rammrath-Brücke, but there are alternative ways to S Teltow Stadt and short runs to Andreezeile, too. From Berlin buses leave every 10 to 20 minutes and to Teltow this is between 10 and 60 minutes. For further details consult the timetable. At about 10pm this route finishes for the evening. If there are enough vehicles, double-decker buses are constantly in use and up to 12 are around at the same time.

#### 115

Route 115 goes from the city to the suburbs as well. It runs parallel to the X10 between Roseneck and Zehlendorf but covers all stops on route unlike the express service. 115 commutes between U Fehrbelliner Platz direct to Neuruppiner Straße at the city limits on a regular basis. On school days, some bus routes are prolonged up to Spanische Allee/Potsdamer Chaussee in the mornings and evenings. The drive takes about 40 minutes in one direction. As with most 100 and 200 routes in Berlin, the 115 leaves at least every 20 minutes until 0:30am. Double-decker buses make for the majority of vehicles used, but especially late at night and for support single decker buses are used too.

#### 625

Route 625 does not leave Teltow. Buses travel between the post district and Ruhlsdorf via the metro station and Warthestraße. You have to be a competent driver to master the old town and the traffic-calming residential areas. Midi buses with a breadth of 2.40m are particularly well suited for this area. The route operates from Monday to Saturday with one journey per hour. In the evenings and on Sundays, the city offers buses on call. Due to a technical issue in the on-call bus centre in the add-on, buses may arrive without prior notice.

#### 626

Route 626 goes between Waldschänke and Heinersdorfer Weg, taking a considerable detour via Ruhlsdorf in the south. The landscape is rather rural but interspersed with businesses and modern housing estates. It is the only route in this area operating hourly schedules each day. Both standard and small buses are suitable for this route.





**M19**

M19 goes from Wittenbergplatz to Herbertstraße in Grunewald and covers the complete length of Tauentzienstraße as well as Kurfürstendamm. At Wittenbergplatz, it turns on the central reservation and on Herbertstraße it turns around the block. Most sections have one bus lane. The drive takes about 20 minutes, with buses departing every 10 to 20 minutes and 30 minutes at night. Some buses coming in from the city terminate at Halensee. Double-decker buses are assigned to this route.

**M29**

Route M29 is aligned to M19 in order to double the frequency on Kurfürstendamm. Buses go from Wittenbergplatz in the east to Roseneck in the west and run largely parallel to the X10. As an M-line or MetroBus, this route operates 24 hours a day. On the add-on route which takes 25 minutes, double-decker buses are used.

**X1**

The name X1 seems inappropriate for this line because it stops everywhere. However it is a much faster route than its sister 601 is because it is a much more direct route. On a section of the route which is not shown, the buses even take a motorway. The X1 serves as the connection between east and west in Teltow and Stahnsdorf. The bus departs every 20 to 60 minutes using mainly articulated buses.

**110**

110 is only working on its northern section from Hertzallee to Elsterplatz and from there further on to Roseneck. Buses partly run parallel to X10, but 110 covers Hochmeisterplatz close to the depot instead of Halensee. The main vehicles are 12m buses which may be chock-full during rush hour.

**285**

285 runs parallel to X10 between U Oskar-Helene-Heim and Beeskowdamm. In the south, it turns on a parking lot in the industrial area Wupperstraße in the north. It travels near to the forest cemetery of Dahlem. For the most part, double-decker buses are used. On school days, there are several tours leaving the depot to support the overstretched regular service.

**601**

601 doubles the frequency of X1 on the east-west thoroughfare through Teltow. However halfway through it takes the northern bypass and covers shopping centre at Oderstraße. At its eastern termination, the route primarily goes from the regional station to Sigridshorst. Routes 601 and X1 are interconnected at certain times on their tours and use some articulated buses.

**602**

To access the business park at Stahnsdorf in the morning, route 602 is in operation with just two services. The bus skips selected stops en route.

**620**

620 takes only about 10 minutes and ranks among the shorter lines in the add-on. It departs every 20 to 30 minutes with through traffic onto lines 625 and 626. Standard buses make for the majority of vehicles in use.

**621**

Line 621 travels between S Teltow Stadt and Ruhlsdorf, but in a more direct route than line 625. It operates during rush hour on an hourly basis. Shifts are characterized by particularly long breaks.

**623**

Line 623 is short as well. In the add-on, it goes between Schrockstraße and U Oskar-Helene-Heim, mostly parallel to X10. Buses depart every 20 minutes except for the weekend.

**N10**

Line N10 serves as a connection between Bahnhof Zoo and Zehlendorf at night. It departs every 30 minutes from 0:30am every day. The route is a combination of day lines X10, 110 and 115. Between Elsterplatz and Königin-Luise-Straße, the real route has been changed for the add-on in order to be more drivable. At Zehlendorf Eiche and Bahnhof Zoo there is a rendezvous to the departure times :15 and :45.

**N12**

At night, route number N12 departs from Zehlendorf to Stahnsdorf on an hourly basis. Between Neuruppiner Straße and Stahnsdorf, the add-on features an alternative route. Connection to line N43 was moved to Ruhlsdorfer Platz. There is hardly any slack during the working shift of N12.



**N43**

N43 corresponds to day line X1 by and large but takes a detour over Rammrath bridge. As with all night routes in the add-on, standard buses are used regularly. N43 departs every 1 to 2 hours.

**N84**

N84 is a steady line in the south of Berlin and covers part of 285. Like lines N12 and N43, only one bus at a time is in operation.

**Still indecisive? Then take a look at the Chapter scenarios.**

**SCENARIOS**

The Add-on comes with 20 scenarios. These lead you across most routes, both during all seasons of the year and under different conditions. They are saved games; the scenarios do not feature any expanded functions in comparison to the normal game mode.

NR.	NAME	LINE	DATE AND TIME	START	TASK DESCRIPTION
1	<b>First assignment (easy)</b>	X10 -83	Sun 13:42 Winter 16.12.12	U Adenauer- platz	Take your colleague's bus according to schedule. On Sundays, this tour is relatively quiet. The long breaks permit one or another incident, but this should not be your objective.
2	<b>Weekend in Teltow (easy)</b>	X1 -62	Sat 16:16 Winter 29.12.12	Wald- schänke	On the way on the east-west-thoroughfare through Teltow and Stahnsdorf. At the terminus, a transfer drive follows, and you return as 601.
3	<b>Strength lies in calmness (easy)</b>	N43 -1	Wed 1:47 Winter 13.02.13	Hof S	It starts at depot Stahnsdorf. After one journey on N43, it is complete. You need not expect anything out of the ordinary, but do not forget the connection at Ruhlsdorfer Platz.
4	<b>hustle and bustle at Ku'damm (advanced)</b>	M29 -6	Fri 16:12 Spring 08.03.13	Roseneck	In fact, Kurfürstendamm is always busy, but particularly so today. The schedule is not very tight though.
5	<b>Sniffing country air (easy)</b>	626 -1	Mon 13:05 Spring 18.03.13	Wald- schänke	No, Teltow has not turned into a health resort, but for Berlin, the drive through villages and business areas seems „rural“ indeed.
6	<b>Rail replacement service again (advanced)</b>	SEV -2	Fri 3:58 Good Friday 29.03.13	Hof S	15 minutes ago, the central office gave out a train replacement service assignment. As an auxiliary driver, you take the first drive from Berlin Zoo. You do find the route by yourself, do you?
7	<b>Keeping connections (advanced)</b>	N10 -3	Thu 1:10 Spring, rain 25.04.13	Hertzallee	Drive to Zehlendorf and don't leave passengers changing buses standing in the rain.
8	<b>School bus (easy)</b>	620 -6	Tue 6:44 Summer 03.06.13	Hof S	During early morning rush hour, line 620 must be supported for school traffic. Start a single tour from train station Teltow.
9	<b>Malling (advanced )</b>	M19 -1	Sat 16:32 Summer 15.06.13	Witten- bergplatz	Due to a lack of parking space, many citizens and tourists take the bus to go shopping.
10	<b>I don't go home tonight without you (advanced)</b>	N12 -1	Fri 0:47 Summer, holidays 26.07.13	Zehlendorf Eiche	You operate the line N12 between Berlin and Brandenburg. There is hardly any traffic at this time of the day. Actually, you do not have any breaks during this assignment.



NR.	NAME	LINE	DATE AND TIME	START	TASK DESCRIPTION
11	<b>To Potsdam (easy)</b>	601 -5	Mon 8:16 Summer 12.08.13	Sigrids- horst	You don't get into Potsdam unfortunately but may take line 601 to Waldschänke. On this short drive, even the roundabouts should be manageable.
12	<b>Start in Spain (difficult)</b>	115 -3	Thu 7:31 Summer, hot 22.08.13	Spanische Allee	It is not Spain but at least Spanische Allee under bright sunshine. This day offers you nothing but a rush hour drive through the south of Berlin.
13	<b>Early duties (difficult)</b>	X10 -12	Mon 6:27 Autumn 02.09.13	Hof C	Enjoy the colourful trees on Berlin's alleys and struggle from the Zoo to Teltow.
14	<b>Fog (advanced)</b>	N84 -81	Sun 1:22 Autumn, fog 15.09.13	Zehlendorf Eiche	Darkness and fog, almost as terrifying as a thunderstorm. Nevertheless, do your duty with the night bus and take party-goers as well as night-shift workers to their destinations.
15	<b>This wonderful shade of grey (advanced)</b>	285 -4	Tue 13:20 Autumn 24.09.13	Hof C	A nice afternoon under a cloudy sky, starting with a "not-in-service" drive to the forest cemetery.
16	<b>Vacation job (easy)</b>	115 -24	Wed 12:57 Autumn, holidays 09.10.13	U Fehrbelliner Platz	Due to the holidays, your line terminates at Neuruppinser Straße. This schedule should be feasible.
17	<b>Golden October (advanced)</b>	110 -1	Thu 20:09 Autumn 17.10.13	Hertzallee	It is one of the last warm evenings in Berlin, although night is falling. After one journey you may return the bus to the depot.
18	<b>Surprise at Schweizerhofpark (difficult)</b>	X10 -8	Mon 14:54 Autumn 11.11.13	S Teltow Stadt	3:05pm at Schweizerhofpark ... what was it? ... It is on the tip of my tongue ... so let's go!
19	<b>Winter wonderland (difficult)</b>	625 -1	Wed 8:08 Winter, snow 04.12.13	Ruhlsdorf	Onset of winter in Teltow. It comes particularly hard for line 625, which must travel through narrow side roads. Can you go back and forth unscathed?
20	<b>Carmageddon (difficult)</b>	X10 -1	Tue 7:18 Winter 10.12.13	Rammrath- Brücke	Every morning, a solid line of cars crawls from Teltow across Knesebeckbrücke to Berlin. You must fall in line at the city limits. In Berlin, there is no time to lose. You have a break of 35 minutes during the next 3 hours, but will you have time to take it? (in order to experience apocalyptic circumstances, increase traffic in the options menu)

## ROUTE LIST

LINE	ROUTE	FROM	TO	DISPLAY	CODE	IBIS
<b>M19</b>	01	Herbertstr.	U Wittenbergplatz	U Mehringdamm	070	019 28 00 001
	02	U Wittenbergplatz	Herbertstr.	S Grunewald	042	019 28 00 002
	03	Rathenauplatz	U Wittenbergplatz	U Mehringdamm	070	019 28 00 003
	04	U Wittenbergplatz	Rathenauplatz	Grunewald Rathenauplatz	092	019 28 00 004
	05	Herbertstr.	U Adenauerplatz	U Adenauerplatz	014	019 28 00 005
	06	U Wittenbergplatz	Herbertstr.	Grunewald Hagenplatz	045	019 28 00 006
	07	U Adenauerplatz	U Wittenbergplatz	U Mehringdamm	070	019 28 00 007
	08	U Wittenbergplatz	U Adenauerplatz	U Adenauerplatz	014	019 28 00 008
<b>M29</b>	01	Roseneck	U Wittenbergplatz	U Hermannplatz	051	029 28 00 001
	02	U Wittenbergplatz	Roseneck	Grunewald Roseneck	094	029 28 00 002
	03	Rathenauplatz	U Wittenbergplatz	U Hermannplatz	051	029 28 00 003
	04	U Wittenbergplatz	Rathenauplatz	Grunewald Rathenauplatz	092	029 28 00 004
	05	U Adenauerplatz	U Wittenbergplatz	U Hermannplatz	051	029 28 00 005
<b>X1</b>	01	Waldschänke	Teltow Bahnhof	Teltow Bahnhof	109	001 36 00 001
	02	Teltow Bahnhof	Waldschänke	S Potsdam Hauptbahnhof	086	001 36 00 002
	03	Puschkinstr.	Teltow Bahnhof	Teltow Bahnhof	109	001 36 00 003
<b>X10</b>	01	Hertzallee	S Teltow Stadt	S Teltow Stadt	110	010 36 00 001
	02	S Teltow Stadt	Hertzallee	S+U-Bahnhof Zoolog. Garten	122	010 36 00 002
	03	Hertzallee	Rammrath-Brücke	Teltow Rammrath-Brücke	087	010 36 00 003
	04	Rammrath-Brücke	Hertzallee	S+U-Bahnhof Zoolog. Garten	122	010 36 00 004
	05	Hertzallee	Andréezeile	Zehlendorf Andreezeile	017	010 36 00 005



LINE	ROUTE	FROM	TO	DISPLAY	CODE	IBIS
	06	Andréezeile	Hertzallee	S+U-Bahnhof Zoolog. Garten	122	010 36 00 006
	07	Zehlendorf Eiche	Rammrath- Brücke	Teltow Rammrath-Brücke	087	010 36 00 007
	08	S Halensee	Hertzallee	S+U-Bahnhof Zoolog. Garten	122	010 36 00 008
	09	U Oskar- Helene-Heim	Rammrath- Brücke	Teltow Rammrath-Brücke	087	010 36 00 009
	11	S+U Zoo- logischer Garten	Rammrath- Brücke	Teltow Rammrath-Brücke	087	010 36 00 011
<b>110</b>	01	Hertzallee	Roseneck	Grunewald Roseneck	094	110 00 00 001
	02	Roseneck	Hertzallee	S+U-Bahnhof Zoolog. Garten	122	110 00 00 002
	03	Hochmeister- platz	Roseneck	Grunewald Roseneck	094	110 00 00 003
<b>115</b>	01	Spanische Allee/P. Ch.	U Fehrbelli- ner Platz	U-Bahnhof Fehrbelliner Platz	032	115 00 00 001
	02	U Fehrbelli- ner Platz	Spanische Allee/P. Ch.	Spanische Allee/ Potsdamer Ch.	103	115 00 00 002
	03	Neuruppiner Str.	U Fehrbelli- ner Platz	U-Bahnhof Fehrbelliner Pl.	032	115 00 00 003
	04	U Fehrbelli- ner Platz	Neuruppiner Str.	Düppel-Süd Neuruppiner Str.	076	115 00 00 004
	05	Roseneck	U Fehrbelli- ner Platz	U-Bahnhof Fehrbelliner Pl.	032	115 00 00 005
	06	U Fehrbelli- ner Platz	Roseneck	Grunewald Roseneck	094	115 00 00 006
	07	Zehlendorf Eiche	U Fehrbelli- ner Platz	U-Bahnhof Fehrbelliner Pl.	032	115 00 00 007
	08	U Fehrbelli- ner Platz	Zehlendorf Eiche	Zehlendorf Eiche	121	115 00 00 008
	09	Rathaus Zehlendorf	U Fehrbelli- ner Platz	U-Bahnhof Fehrbelliner Pl.	032	115 00 00 009
	11	Neuruppiner Str.	U Fehrbelli- ner Platz (Aussetzer)	U-Bahnhof Fehrbelliner Pl.	033	115 00 00 011
	12	U Fehrbel- liner Platz (Einsetzer)	Neuruppiner Str.	Düppel-Süd Neuruppiner Str.	076	115 00 00 012
	13	Roseneck	U Fehrbelli- ner Platz (Aussetzer)	U-Bahnhof Fehrbelliner Pl.	033	115 00 00 013
	14	U Fehrbel- liner Platz (Einsetzer)	Roseneck	Grunewald Roseneck	094	115 00 00 014

LINE	ROUTE	FROM	TO	DISPLAY	CODE	IBIS
	15	Rathaus Zehlendorf	U Fehrbel- liner Platz (Aussetzer)	U-Bahnhof Fehrbelliner Pl.	033	115 00 00 015
	16	U Fehrbelli- ner Platz	Spanische Allee/P. Ch. (Aussetzer)	Spanische Allee/ Potsdamer Ch.	103	115 00 00 016
<b>285</b>	01	Am Wald- friedhof	Wupperstr.	S+U-Bahnhof Rathaus Steglitz	090	285 00 00 001
	02	Wupperstr.	Am Wald- friedhof	Dahlem Waldfriedhof	115	285 00 00 002
	03	U Oskar- Helene-Heim	Wupperstr.	S+U-Bahnhof Steglitz	090	285 00 00 003
	04	Wupperstr.	U Oskar- Helene-Heim	U-Bahnhof Oskar-Helene-Hm.	080	285 00 00 004
	05	Am Wald- friedhof	Andréezeile	Zehlendorf Andreezeile	017	285 00 00 005
	06	Wupperstr.	Am Wald- friedhof (Aussetzer)	Dahlem Waldfriedhof	115	285 00 00 006
	07	Am Wald- friedhof	Zehlendorf Eiche	Zehlendorf Eiche	121	285 00 00 007
	08	Wupperstr.	U Oskar- Helene-Heim (Aussetzer)	U-Bahnhof Oskar-Helene-Hm.	080	285 00 00 008
	09	Zehlendorf Eiche	Wupperstr.	Lichterfelde Appenzeller Str.	019	285 00 00 009
	10	Wupperstr.	Zehlendorf Eiche	Zehlendorf Eiche	121	285 00 00 010
	11	Am Wald- friedhof	Wupperstr.	Lichterfelde Appenzeller Str.	019	285 00 00 011
	13	U Oskar- Helene-Heim	Wupperstr.	Lichterfelde Appenzeller Str.	019	285 00 00 013
<b>601</b>	01	Waldschänke	Sigridshorst	Teltow Sigridshorst	102	601 00 00 001
	02	Sigridshorst	Waldschänke	S Potsdam Hauptbahnhof	086	601 00 00 002
	03	Waldschänke	Teltow Bahnhof	Teltow Bahnhof	109	601 00 00 003
	04	Teltow Bahnhof	Waldschänke	S Potsdam Hauptbahnhof	086	601 00 00 004
	05	Warthestr.	S Teltow Stadt	S Teltow Stadt	110	601 00 00 005
	06	Warthestr.	Waldschänke	Stahnsdorf Bahnhofstr.	020	601 00 00 006

LINE	ROUTE	FROM	TO	DISPLAY	CODE	IBIS
	08	Warthestr.	Waldschänke	Rathaus Babelsberg	088	601 00 00 008
<b>602</b>	01	Waldschänke	Havelstr.	Teltow Havelstr.	048	602 00 00 001
<b>620</b>	01	Rammrath- Brücke	S Teltow Stadt	S Teltow Stadt	110	620 00 00 001
	02	S Teltow Stadt	Rammrath- Brücke	S Wannsee Bhf	117	620 00 00 002
	03	Rammrath- Brücke	Warthestr.	Teltow Warthestr.	119	620 00 00 003
	04	Teltow Bahnhof	Rammrath- Brücke	Stahnsdorf Waldschänke	116	620 00 00 004
	06	S Teltow Stadt	Warthestr.	Teltow Warthestr.	119	620 00 00 006
<b>621</b>	01	S Teltow Stadt	Ruhlsdorf	Bahnhof Ludwigsfelde	068	621 00 00 001
	02	Ruhlsdorf	S Teltow Stadt	S Teltow Stadt	110	621 00 00 002
<b>623</b>	01	Schrockstr.	U Oskar- Helene-Heim	U-Bahnhof Oskar-Helene-Hm.	080	623 00 00 001
	02	U Oskar- Helene-Heim	Schrockstr.	Stahnsdorf Hildegardstr.	052	623 00 00 002
	04	U Oskar- Helene-Heim	Schrockstr.	Stahnsdorf Waldschänke	116	623 00 00 004
<b>625</b>	01	Ruhlsdorf	Postviertel	Postviertel Paul-Lincke-Str.	085	625 00 00 001
	02	Postviertel	Ruhlsdorf	Ruhlsdorf	097	625 00 00 002
	03	Ruhlsdorf	Warthestr.	Teltow Warthestr.	119	625 00 00 003
	04	Warthestr.	Ruhlsdorf	Ruhlsdorf	097	625 00 00 004
	05	S Teltow Stadt	Postviertel	Postviertel Paul-Lincke-Str.	085	625 00 00 005
	06	Postviertel	S Teltow Stadt	S Teltow Stadt	110	625 00 00 006
	08	Postviertel	Bürgertreff	Teltow Bürgertreff	028	625 00 00 008
<b>626</b>	01	Waldschänke	Heinersdor- fer Weg	Teltow Heinersdorf. Weg	050	626 00 00 001
	02	Heinersdorfer Weg	Waldschänke	Stahnsdorf Waldschänke	116	626 00 00 002
	03	Waldschänke	S Teltow Stadt	S Teltow Stadt	110	626 00 00 003
	04	S Teltow Stadt	Waldschänke	Stahnsdorf Waldschänke	116	626 00 00 004

LINE	ROUTE	FROM	TO	DISPLAY	CODE	IBIS
	05	Enzianweg	S Teltow Stadt	S Teltow Stadt	110	626 00 00 005
	06	S Teltow Stadt	Enzianweg	Stahnsdorf Enzianweg	031	626 00 00 006
	07	Waldschänke	Ruhlsdorf	Ruhlsdorf	097	626 00 00 007
<b>N10</b>	51	Hertzallee	Schrockstr.	Zehlendorf Sachtlebenstr.	099	010 35 00 051
	52	Schrockstr.	Hertzallee	S+U-Bahnhof Zoolog. Garten	122	010 35 00 052
	53	Hertzallee	Rathaus Zehlendorf	Rathaus Zehlendorf	091	010 35 00 053
	54	Zehlendorf Eiche	Hertzallee	S+U-Bahnhof Zoolog. Garten	122	010 35 00 054
	56	Schrockstr.	U Oskar- Helene-Heim	U-Bahnhof Oskar-Helene-Hm.	080	010 35 00 056
<b>N12</b>	01	Zehlendorf Eiche	Waldschänke	Stahnsdorf Bahnhofstr.	020	012 35 00 001
	02	Waldschänke	Zehlendorf Eiche	Zehlendorf Eiche	121	012 35 00 002
	03	Zehlendorf Eiche	Waldschänke	Stahnsdorf Waldschänke	116	012 35 00 003
<b>N43</b>	01	Waldschänke	Teltow Bahnhof	Teltow Bahnhof	109	043 35 00 001
	02	Teltow Bahnhof	Waldschänke	S Potsdam Hauptbahnhof	086	043 35 00 002
<b>N84</b>	01	Wupperstr.	Zehlendorf Eiche	Zehlendorf Eiche	121	084 35 00 001
	02	Zehlendorf Eiche	Wupperstr.	S+U Tempelhof	111	084 35 00 002
	03	Zehlendorf Eiche	Wupperstr.	U Alt-Tempelhof	016	084 35 00 003







**HALYCON MEDIA**  
 DER SPEZIALIST FÜR SIMULATIONEN  
[www.halyconshop.de](http://www.halyconshop.de)